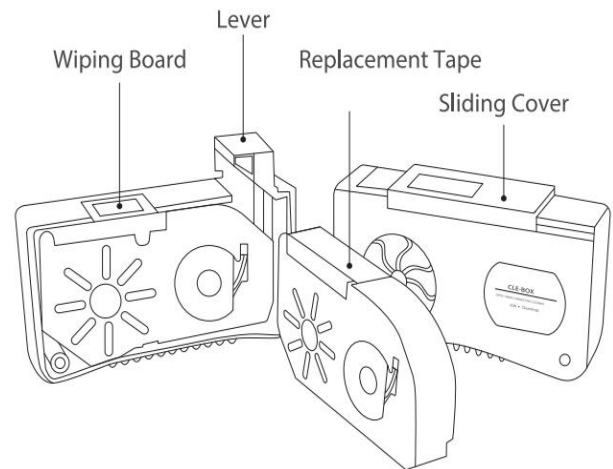
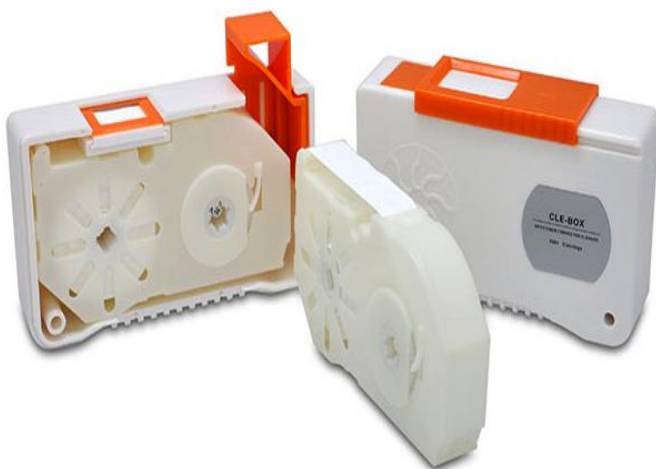


# CLE-BOX Fiber Optic Cassette Cleaner



CLE-BOX is essential accessory to maintain and guarantee good quality of fiber optic connection. It is a high performance non-alcohol cleaner designed specifically to clean fibre end faces of any male fibre connector. Using a superfine textile tape, it easily and efficiently Times the fibre end face without nicking or scratching the surface or leaving alcohol bloom in order to maintain good quality optical connections. Suitable for connector such as SC, FC, MU, LC, ST, D4, DIN, E2000 etc. Cassette tapes are available for replacement after 500+ cleaning operations to ensure low cleaning cost.

## Product View



## Description

Cleanliness of fiber optic connections is critical to the performance of optical communication networks. Contamination dirty fiber on a connector end face, even if only at the microscopic level, can create severe problems. Dirty fiber that blocks the fiber core generates strong back reflections (Return Loss), and may impact attenuation (Insertion Loss). Therefore, using a right cleaner to clean your fiber connectors is necessary. There are many types cleaners available in the market.

## Specifications

Configuration Type	Cassette Cleaner
Applicable Connector	SC, FC, MU, LC, ST, D4, DIN, E2000 Connector
Cleaning Level	100
Dimensions	120mm x 85mm x 35mm

Clean Durability 500+ times

Tape Replaceable Support

Weight 100g

## Features

Well handled and antistatic

Use of alcohol-free special microfiber straps

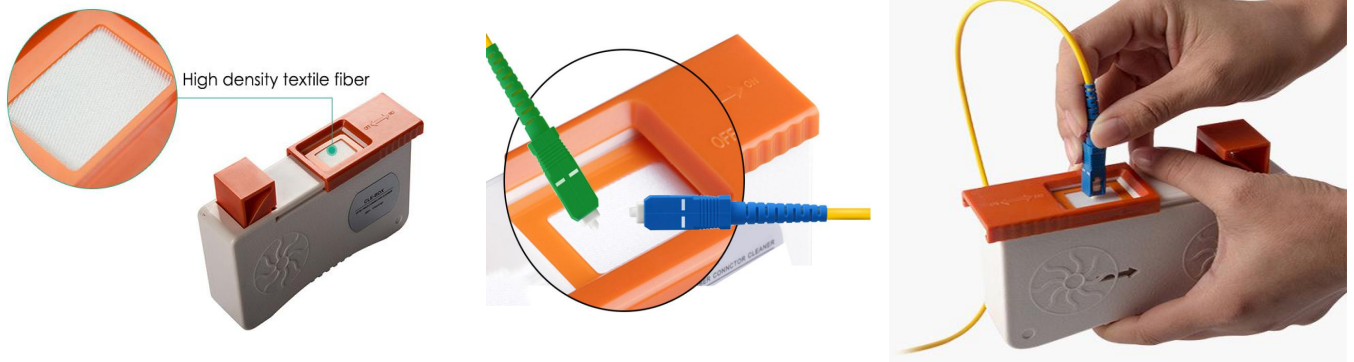
Easy to replace the tape, no pollutions

Operational Temperature Range: -20 to 50 Degrees Celsius

Operational Humidity Range: 20% to 80% R.H.

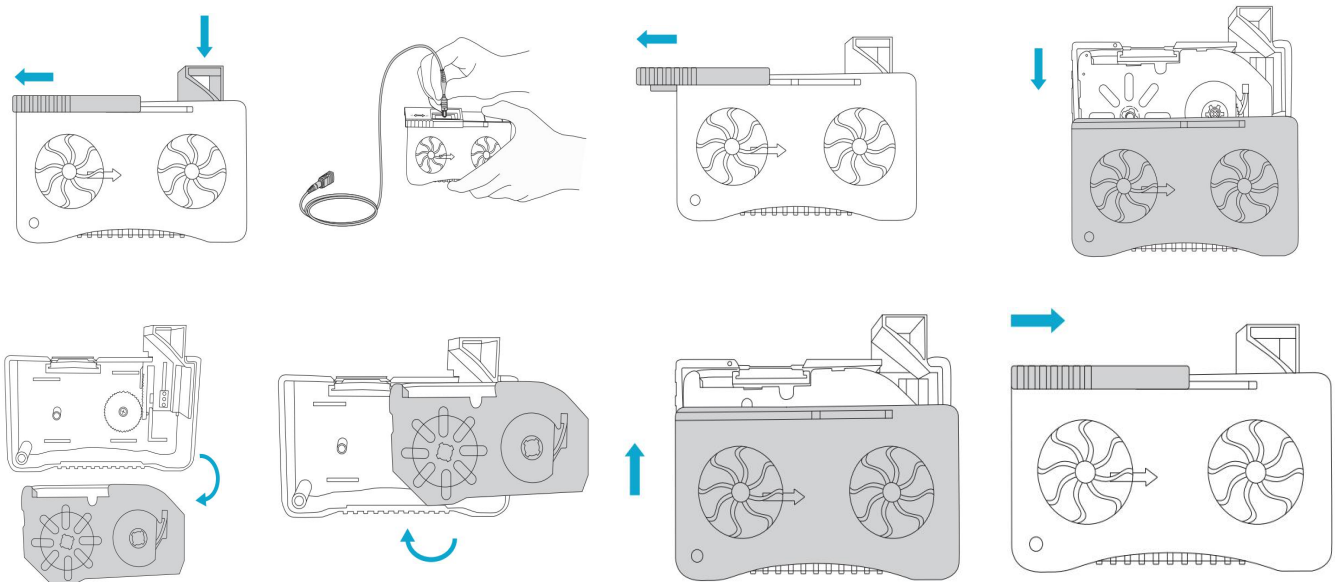
Preservation Temperature: -20 to 60 Degrees Celsius

Very fine fabric tape that cleans the fiber connectors without causing scratch

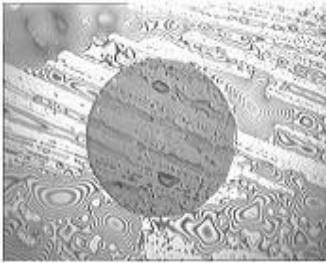
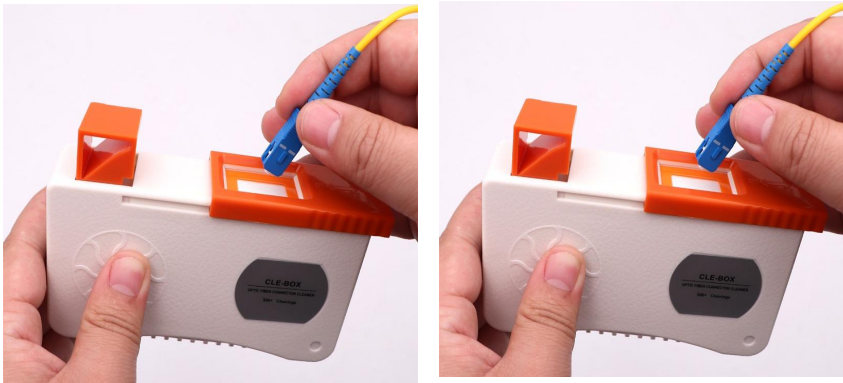


NOTE: Open the shutter by gripping the sliding cover, a new section of cleaning tape will be available.

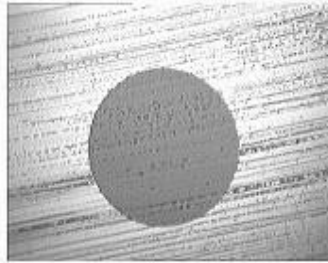
## How to operate?



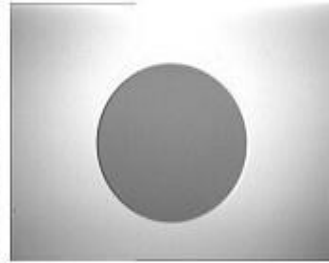
## Operation & Cassette Tape Replacement Guide



Before1



Before2



After



1. Take off sliding cover



2. Take off side cover



3. Take away old tape



4. Put on new tape



5. Put on side cover



6. Put on sliding cover

## Application

Outdoor FTTH applications

Cable assembly production facility

Testing laboratories

Ideal for OSP and premises applications, enterprise applications, field installations, OEM assembly and in research labs