



Elite Active Clad Alignment fusion splicer

T-502S

Powered by



NanoTune™
Enhanced splice experience



SumiCloud™



The future of splicing in your hands



Compact and light
1.1kg



Reduce work time
Splicing 6s
Heating 12s



Hot Core Analyzing



Splice Data
Utilization

Versatile solution

01 Hassle free preparation

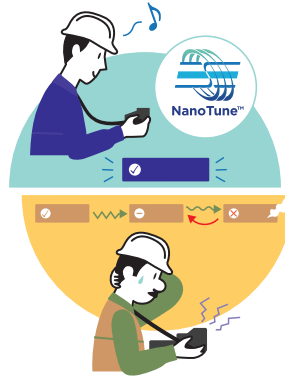


T-502S and new working tray get your job done quicker

Open and splice ergonomic design



02 Enhanced splice experience



NanoTune executes high precision splices

03 Simplified splice management



SumiCloud¹ makes work easier and helps maintain your splicer

Specifications

Items	T-502S	
Optical fiber requirements	Material	Silica glass
	Fiber count / Profile types	Single / SMF(G.652), MMF(G.651), DSF(G.653), NZDSF(G.655), BIF(G.657)
	Fiber diameter	Cladding diameter: 125 μm, Coating diameter: 100 to 1,000μm
	Cleave length	5 to 16mm for single fiber, 8mm for drop cable
Standard performance	Splice loss (typical) ^{*2}	SMF : 0.03dB, MMF : 0.01dB, DSF : 0.05dB, NZDSF : 0.05dB
	Return loss (typical)	60dB or greater
	Splice time (typical)	6sec (SM G652 Quick Mode)
	Heating time (typical)	12sec (FPS-61-2.6 sleeve, S60mm 0.25 Quick Mode)
	Splice & Heat cycles per battery full charge ^{*3}	Approx. 250 (BU-17)
	Fiber view & magnification	2 CMOS cameras observation, 180X (zoom : 370X) for X or Y single axis view
	Proof test	1.96 - 2.09N
	Applicable protection sleeve	60mm, 40mm & Sumitomo Nano sleeves
Programs	Splice programs	Max. 300, 18 are pre-optimised, 282 editable by user
	Heating programs	Max. 100, 27 are pre-optimised, 73 editable by user
Functions	Splice image capture / Splice data storage	200 images / 10,000 splice data (internal memory only) 50,200 / 20,000 (With 16GB SD card)
	Multi clamp	Provided, 250μm, 900μm tight & loose buffer fiber, 2&3mm jacket cord and rectangular drop cable, 3.5mm round drop cable
	Heater clamp for splice on connector	Provided
	Auto-start	Splice / Heating
	Automatic fiber identification	SMF / MMF
	Automatic arc calibration	Automatically compensates for environmental condition changes
	Core loss estimation	Provided, HCA : Hot Core Analyzing
Size / Weight	Wireless LAN connectivity (Option) ^{*4}	Provided
	Onboard user training video	Provided
Terminals	Size	126(W) x 154(D) x 83(H) mm (without protrusion)
	Weight	0.9kg (without Battery), 1.1kg (with Battery BU-17)
	Monitor	4.3 inch color LCD display with capacitive touch screen
Power supply	USB port	USB 2.0 (mini-B type)
	Storage media	SD / SDHC memory card Max32GB
Operation condition	AC input	AC 100 - 240V, 50 / 60Hz (ADC-15)
	DC input	DC 10 - 15V
Storage condition	Battery pack	Li-ion 10.8V, 4,560mAh (BU-17)
	Altitude	Altitude : 0 - 5,000m, Temperature : -10 - +50°C, Humidity : 0 - 95%RH (non-condensing), Wind velocity : up to 15m/sec
Electrode life ^{*5}	Temperature	Temperature : -40 - +80°C, Humidity : 0 - 95%RH (non-condensing), Battery : -20 - +30°C (long term)
Software updates	Battery	6,000 arc discharges
Data management	Internet	Can be stored, edited and analyzed by dedicated PC software

*1, 4 : SumiCloud availability / wireless LAN connectivity depends on region. More details: <https://global-sei.com/sumitomo-electric-splicers/products/sumicloud/>

*2 : Average value of the final inspection in room temperature with Sumitomo identical fiber. Measured by cut-back method relevant to ITU-T and IEC standards.

*3 : Splice & Heat cycles may vary depending on the battery status and the operating environment.

*5 : Achieved in lab condition. Electrode life may vary depending on the operating environment.

Environmental Durability*

Test details	
Shock resistance	Drop from 76cm on 5 faces (excluding top face)
Rain resistance	Equivalent IPx2
Dust resistance	Equivalent IP5X

*Splicer operation after shock, impact, water or dust tests, was confirmed under battery power, by Sumitomo. Does not guarantee the product will not be damaged by these conditions.

Standard Kit Contents

Part name	Part No.	Qty.	Part name	Part No.	Qty.
AC adapter	ADC-15	1pc	Carrying case	CC-17	1pc
AC power cord	PC-AC<'>2P	1pc	Working tray	WT-17	1pc
Battery pack	BU-17	1pc	Shoulder belt	—	1pc
Spare electrode	ER-17	1pair	USB cable	—	1pc
Quick reference guide	—	1pc			

*X=2(USA), 3(EU), 4(JP), 5(UK), 6(AUS), 7(South Africa)

Items listed in Standard Kit Contents are always included with the splicer body. Overall kit content may vary regionally. Please check with your local authorised reseller to confirm kit content in your region.

Optional Accessories

	Part name	Part No.	Remarks
Accessories for Splicer	SumiCloud card	WLS0-0416	For SumiCloud™ connection
	Fiber holder	FHS-025 / LB5	For 0.9mm loose buffered single fiber Connector holder
	Transfer clamp	CLP-201	Transferring drop cable on working tray
	Battery pack	BU-17	Li-ion 10.8V, 4,560mAh
	Battery charger	BC-17	For BU-17
	Car battery cable	PC-V25	For car battery operation (cigarette socket type)
	V-groove cleaning brush	VGT-2	Brush for cleaning V-groove
	Electrode	ER-17	—
	Cooling tray	FCT-17	—
	Accessories	Fiber cleaver	FC-6S+ FC-6R+
Hand held fiber cleaver		FC-8R-FC FC-8R-F	Automatic blade rotation cleaver with counter Automatic blade rotation cleaver (no counter)
Jacket remover		JR-M03	Jacket remover for single fiber
Lose tube cutter		LTC-01	—
Alcohol dispenser		ASB-17	—
Fiber protection sleeve		FPS-1	60mm, diameter after shrink approx. 3.2mm
		FPS-40	40mm, diameter after shrink approx. 3.2mm
		FPS-61-2.6	61 mm, diameter after shrink approx. 2.6mm